



WALTON ROBINSON



To Let

30 Sloane Court, Jesmond NE2 4PF

£1,055 PCM



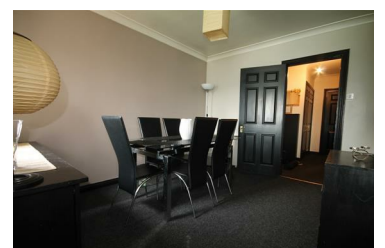
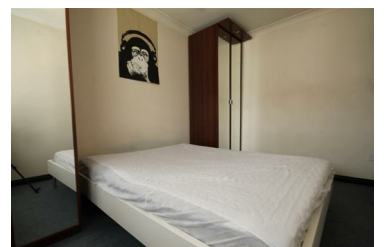
Two-bedroom apartment to rent in Sloane Court, Jesmond.

The property features a living room, separate dining area, and kitchen with essential appliances. There is one double and one single room, ideal for a couple or two sharers, and a family bathroom with shower over bath. Externally, the property has an allocated parking bay.

Ideal for students or young professionals, this apartment is located in the highly desirable area of Jesmond, with an easy commute to the City Centre, Universities and a number of amenities on the doorstep, including the popular Osborne Road with its bars and restaurants.

****All property descriptions are assumed correct at time of publication. Any reference to property details, specifications or other inclusions are subject to change and may be altered at any given time.**

- Third Floor Apartment
- £121.40PPPW / £1,055 PCM
- One Double Bedroom
- Family Bathroom
- EPC Rating - D
- Living Room
- AVAIL 09/09/2026 - 13/09/2027
- One Single Bedroom
- Allocated Parking Bay
- COUNCIL TAX BAND - C



101 Percy Street, City Centre, Newcastle upon Tyne, NE1 7RY

T: 01912431000 | Email: enquiries@seekersproperty.co.uk | www.waltonrobinson.com